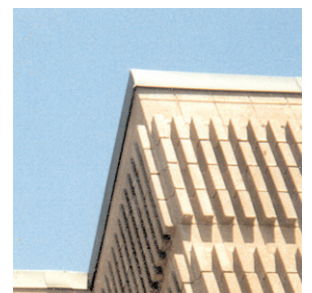


Dolan and Traynor Warehouse and Offices, Wayne, New Jersey

The project consolidated three remote facilities into one new facility to enhance their business operation and increase efficiency. The building provides 42,000 square feet of space and 15,000 square feet on 2 levels dedicated to corporate offices, training and sales. Architectural services included site design, programming, space planning, furniture selection, custom millwork, lighting, finishes and graphics. After many years of use, the project still received positive response from Dolan and Traynor. This is an example of our full range of services which started with a few sketches for a vacant site and continued all the way to selecting chairs and desks for the company's employees.



IW06



THE IVES ARCHITECTURE STUDIO

14-25 Plaza Rd. Suite S-3-5 Fair Lawn, New Jersey 07410 (201)773-9111

